

	24 V power supply cable			Signal cable			Signal cable with STO wires		
	2 x 0,25 mm ²			16 x 0,14 mm ²			18 x 0,14 mm ²		
	Standard	Drag-Chain	ATEX	Standard	Drag-Chain	ATEX	Standard	Drag-Chain	ATEX
esiMot M (24-60 V DC)	-	-	-	✓	✓	✓	✓	✓	✓
esiMot XL (230 V AC)	-	✓	✓	✓	✓	✓	✓	✓	✓
esiMot XL (400 V AC)	-	✓	-	✓	✓	-	✓	✓	-
esiMot SL (400 V AC)	-	✓	-	✓	✓	-	✓	✓	-

esiMot M (24-60 V DC) *) not available in ATEX	esiMot5/2*
	esiMot6/1
	esiMot6/2
	esiMot6/5*
	esiMot7/1
	esiMot7/2

Power cable without ballast			Power cable with ballast		
5 x 0,75 mm ² (from 25 m)			6 x 0,5mm ² (to max. 20 m)		
Standard	Drag-Chain	ATEX	Standard	Drag-Chain	ATEX
✓	✓	✓	✓	✓	✓

esiMot XL (230 V AC) *) not available in ATEX	esiMot21/3
	esiMot22/3
	esiMot31/3
	esiMot32/3
	esiMot33/2*
	esiMot41/2*

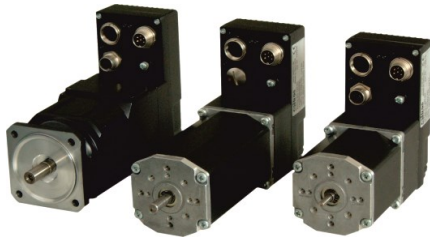
Power cable without ballast			Power cable with ballast		
3x 1,0 mm ²			5x 1,0 mm ²		
Standard	Drag-Chain	ATEX	Standard	Drag-Chain	ATEX
✓	✓	✓	✓	✓	✓

esiMot XL (400 V AC) not available in ATEX	esiMot421/6
	esiMot422/6
	esiMot431/6
	esiMot432/6
	esiMot433/4
	esiMot441/4

Power cable without ballast			Power cable with ballast		
4 x 1,5 mm ²			7 x 1,0 mm ²		
Standard	Drag-Chain	ATEX	Standard	Drag-Chain	ATEX
-	✓	-	✓	✓	-

esiMot SL (400 V AC) not available in ATEX	esiMot551/3
	esiMot552/2
	esiMot554/3
	esiMot555/2

Power cable without ballast			Power cable with ballast		
4 x 1,5 mm ²			7 x 1,5 mm ²		
Standard	Drag-Chain	ATEX	Standard	Drag-Chain	ATEX
-	✓	-	-	✓	-



esiMot M (24-60 V DC)	esiMot5/2*
	esiMot6/1
	esiMot6/2
	esiMot6/5*
	esiMot7/1
	esiMot7/2

*) not available in ATEX

Power cable without ballast			Power cable with ballast		
5 x 0,7 5mm ² (from 25 m)			6 x 0,5mm ² (to max. 20 m)		
Standard	Drag-Chain	ATEX	Standard	Drag-Chain	ATEX

Length							Length	
2 m	-	-	-	630.01400-0	630.01400-7	630.01601-2	2 m	
				V00715	V00722	V00922		
5 m	-	-	-	630.01401-0	630.01401-7	630.01601-7	5 m	
				V00725	V00729	V00924		
10 m	-	-	-	630.01402-0	630.01402-7	630.01601-8	10 m	
				V00731	V00737	V00925		
15 m	-	-	-	630.01403-0	630.01403-7	630.01601-9	15 m	
				V00739	V00744	V00926		
20 m	-	-	-	630.01404-0	630.01404-7	630.01601-6	20 m	
				V00746	V00748	V00923		
25 m	630.01415-0	630.01415-3**	630.01602-1**	-	-	-	25 m	
	V00781	V00784	V00927					
30 m	630.01418-0	<td>	630.01418-6**	-	-	-	30 m	
			V00792					
35 m	630.01416-0	<td>	630.01416-6**	-	-	-	35 m	
	V00785		V00790					

<td> Item no. is assigned in the event of an order

Connectors

Power connector for soldering connection			
6-pin cable socket	Version		Art.-No.:
Cable Ø 6-8 mm	Straight	630.01409-0	V00761
max. 0,75 mm ² (AWG20)	Angled	630.01409-5	V00766



esiMot XL (230 V AC)	esiMot21/3	Power cable without ballast			Power cable with ballast				
	esiMot22/3	3 x 1,0 mm ²			5 x 1,0 mm ²				
	esiMot31/3	Standard	Drag-Chain	ATEX	Standard	Drag-Chain	ATEX		
	esiMot32/3	Length						Length	
	esiMot33/2*	2 m	630.01500-0 V00851	630.01500-1 V00852	-	630.01510-0 V00866	630.01520-0 V00877	630.01530-6 V00889	2 m
	esiMot41/2*	5 m	630.01501-0 V00853	630.01501-1 V00854	-	630.01511-0 V00867	630.01521-0 V00878	630.01530-7 V00890	5 m
*) not available in ATEX		10 m	630.01504-0 V00858	630.01504-1 V00859	-	630.01512-0 V00868	630.01522-0 V00879	630.01530-8 V00891	10 m
		15 m	630.01505-0 V00860	630.01505-1 V00861	-	630.01514-0 V00869	630.01523-0 V00880	630.01530-9 V00892	15 m
		20 m	630.01503-0 V00856	630.01503-1 V00857	-	630.01516-0 V00871	630.01524-0 V00881	630.01530-10 V00884	20 m
		25 m	630.01507-0 V00863	630.01507-1 V00864	-	630.01515-0 V00870	630.01526-0 V00883	630.01530-11 V00885	25 m
		30 m	630.01506-0 V00862	<td>	-	630.01517-0 V00872	630.01525-0 V00882	630.01530-12 V00886	30 m
		35 m	630.01508-0 V00865	<td>	-	630.01416-5 V00789	<td>	630.01530-13 V00887	35 m
		40 m				630.01531-0 V00893		630.01530-14 V00888	40 m
			Power connector for crimp connection						
			7-pin cable socket	Version		Art.-No.:			
			Cable Ø 4-12 mm	Straight	630.01502-0	V00855			
		max. 1,5 mm ² (AWG19)							
		<td> Item no. is assigned in the event of an order							
		Connectors							



esiMot XL (400 V AC)	esiMot421/6
	esiMot422/6
	esiMot431/6
	esiMot432/6
	esiMot433/4
	esiMot441/4

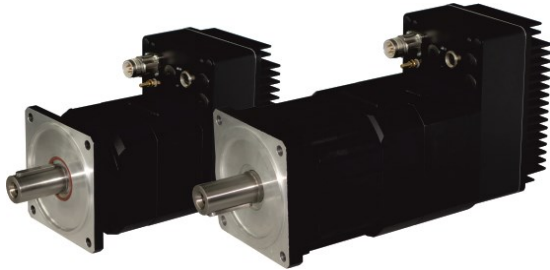
not available in ATEX

Length	Power cable without ballast			Power cable with ballast			Length
	4 x 1,5 mm ²			6 x 1,0 mm ²			
	Standard	Drag-Chain	ATEX	Standard	Drag-Chain	ATEX	
2 m	-	630.01555-0	-	630.01541-0	630.01551-0	-	2 m
				V00895	V00901		
5 m	-	630.01556-0	-	630.01542-0	630.01552-0	-	5 m
				V00896	V00902		
10 m	-	630.01557-0	-	630.01543-0	630.01553-0	-	10 m
				V00897	V00903		
15 m	-	630.01558-0	-	630.01544-0	630.01554-0	-	15 m
				V00898	V00934		
20 m	-	<tbd>	-	630.01545-0	<tbd>	-	20 m
				V00899			
25 m	-	<tbd>	-	630.01546-0	630.01565-0	-	25 m
				V00900	V00909		
30 m	-	<tbd>	-	<tbd>	630.01566-0	-	30 m
					V00910		
35 m	-	<tbd>	-	<tbd>	630.01567-0	-	35 m
					V00911		

<tbd> Item no. is assigned in the event of an order

Connectors

Power connector for crimp connection			
7-pin cable socket	Version		Art.-No.:
Cable Ø 4-12 mm	Straight	630.01502-0	V00855
max. 1,5 mm ² (AWG19)			



esiMot SL (400 V AC) not available in ATEX	esiMot551/3
	esiMot552/2
	esiMot554/3
	esiMot555/2

Power cable without ballast			Power cable with ballast		
4 x 1,5 mm ²			7 x 1,5 mm ²		
Standard	Drag-Chain	ATEX	Standard	Drag-Chain	ATEX

Length						Length
2 m	-	<td>	-	-	630.02000-0 V01033	2 m
5 m	-	<td>	-	-	630.02001-0 V01034	5 m
10 m	-	<td>	-	-	630.02002-0 V01035	10 m
15 m	-	<td>	-	-	630.02003-0 V01036	15 m
20 m	-	<td>	-	-	630.02004-0 V01037	20 m
25 m	-	<td>	-	-	630.02005-0 V01038	25 m
30 m	-	<td>	-	-	630.02006-0 V01039	30 m
35 m	-	<td>	-	-	630.02007-0 V01040	35 m

<td> Item no. is assigned in the event of an order

Connectors

Power connector for crimp connection			
6-pin cable socket	Version		Art.-No.:
Cable-Ø 5-17 mm	Straight	630.02009-0	V01041
1,0 - 2,5 mm ²			



24 V power supply cable			Signal cable			Signal cable with STO wires		
2 x 0,25 mm ²		16 x 0,14 mm ²			18 x 0,14 mm ²		18 x 0,25 mm ²	
Drag-Chain	ATEX	Standard	Drag-Chain	ATEX	Standard	Drag-Chain	ATEX	Drag-Chain

Length										Length
2 m	630.01435-0	630.01439-1	630.01400-1	630.01400-8	630.01600-6	630.01424-1	630.01430-1	<tdb>		2 m
	V00816	V00832	V00716	V00723	V00918	V00798	V00806			
3 m	630.01435-1									3 m
	V00817									
5 m	630.01435-2	630.01439-2	630.01401-1	630.01401-8	630.01600-7	630.01425-1	630.01431-1	630.01431-3	630.01431-2	5 m
	V00818	V00833	V00726	V00730	V00919	V00799	V00807	V00809	V00808	
10 m	630.01440-3	630.01439-3	630.01402-1	630.01402-8	630.01600-8	630.01423-2	630.01423-0	630.01423-3		10 m
	V00840	V00834	V00732	V00738	V00920	V00796	V00795	V00797		
15 m	630.01435-4	630.01439-4	630.01403-1	630.01403-8	630.01600-9	630.01432-2	630.01432-1	<tdb>		15 m
	V00820	V00835	V00740	V00745	V00921	V00811	V00810			
20 m	630.01435-5	630.01439-5	630.01422-1	630.01404-8	630.01600-10	630.01434-2	630.01434-1	630.01434-3		20 m
	V00821	V00836	V00794	V00749	V00913	V00814	V00813	V00815		
25 m	630.01435-6	630.01439-6	630.01415-1	<tdb>	630.01600-11	630.01437-2	630.01437-3	<tdb>		25 m
	V00822	V00837	V00782		V00914	V00828	V00829			
30 m	630.01434-7	630.01439-7	630.01517-1	630.01517-8	630.01600-12	630.01436-2	630.01436-3	630.01436-4		30 m
	V00823	V00838	V00873	V00874	V00915	V00825	V00826	V00827		
35 m	630.01435-8	630.01439-8	630.01416-1	<tdb>	630.01600-13	630.01416-2	<tdb>	<tdb>		35 m
	V00824	V00839	V00786		V00916	V00787				
40 m					630.01600-14	630.01442-2				40 m
					V00917	V00842				

<tdb> Item no. is assigned in the event of an order

Signal connector for solder connection			
19-pin cable connector	Version		Art.-No.:
Cable-Ø 6-8 mm	Straight	630.01409-1	V00762
max. 0,25 mm ² (AWG24)	Angled	630.01409-6	V00767

**Erläuterung zu den Signalkabeln:**

With **esiMot M** (24 - 60 V DC), signal cables are only necessary if digital or analog inputs/outputs are used.
For motors with STO (Safe Torque Off), 18 x 0.14 mm² signal cables are always required.

For **esiMot XL** (230 V AC) and **esiMot SL** (400 V AC), the 24 V logic supply must always be supplied externally.
This means that at least the 24 V connection cable is required.
If digital or analogue inputs/outputs are used, the signal cable 16 x 0.14 mm² is required.
For motors with STO (Safe Torque Off), 18 x 0.14 mm² signal cables are always required.